

6-3 Practice

Polynomial Functions

State the degree and leading coefficient of each polynomial in one variable. If it is not a polynomial in one variable, explain why.

1. $(3x^2 + 1)(2x^2 - 9)$

2. $\frac{1}{5}a^3 - \frac{3}{5}a^2 + \frac{4}{5}a$

3. $\frac{2}{m^2} + 3m - 12$

4. $27 + 3xy^3 - 12x^2y^2 - 10y$

Find $p(-2)$ and $p(3)$ for each function.

5. $p(x) = x^3 - x^5$

6. $p(x) = -7x^2 + 5x + 9$

7. $p(x) = -x^5 + 4x^3$

8. $p(x) = 3x^3 - x^2 + 2x - 5$

9. $p(x) = x^4 + \frac{1}{2}x^3 - \frac{1}{2}x$

10. $p(x) = \frac{1}{3x^3} + \frac{2}{3x^2} + 3x$

If $p(x) = 3x^2 - 4$ and $r(x) = 2x^2 - 5x + 1$, find each value.

11. $p(8a)$

12. $r(a^2)$

13. $-5r(2a)$

14. $r(x + 2)$

15. $p(x^2 - 1)$

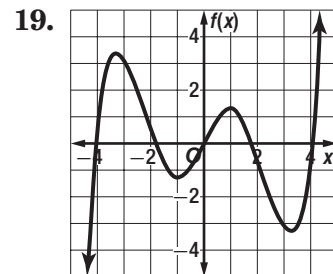
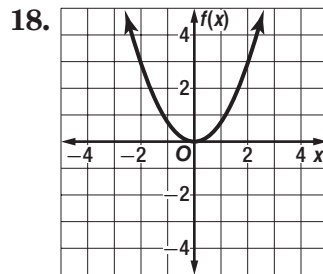
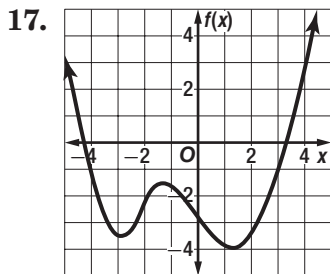
16. $5p(x + 2)$

For each graph,

a. describe the end behavior,

b. determine whether it represents an odd-degree or an even-degree function, and

c. state the number of real zeroes.



20. WIND CHILL The function $C(w) = 0.013w^2 - w - 7$ estimates the wind chill temperature $C(w)$ at 0°F for wind speeds w from 5 to 30 miles per hour. Estimate the wind chill temperature at 0°F if the wind speed is 20 miles per hour.